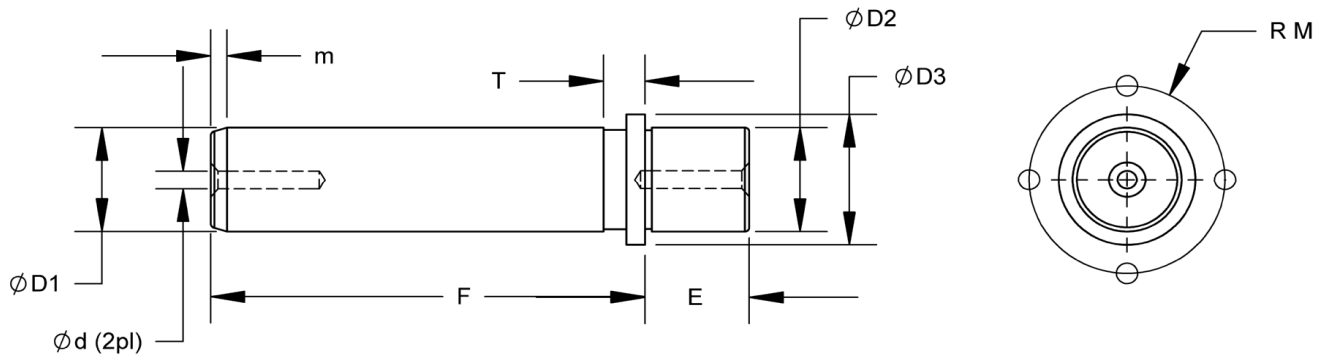


Case Hardened to 60 - 64 Rc



F	Diameter (D1)							
	20	25	32	40	50	63	80	
80	P21.020.080	P21.025.080						
90	P21.020.090	P21.025.090						
100	P21.020.100	P21.025.100	P21.032.100	P21.040.100				
110	P21.020.110	P21.025.110	P21.032.110	P21.040.110	P21.050.110			
125	P21.020.125	P21.025.125	P21.032.125	P21.040.125	P21.050.125	P21.063.125	P21.080.125	
140	P21.020.140	P21.025.140	P21.032.140	P21.040.140	P21.050.140	P21.063.140	P21.080.140	
160	P21.020.160	P21.025.160	P21.032.160	P21.040.160	P21.050.160	P21.063.160	P21.080.160	
180		P21.025.180	P21.032.180	P21.040.180	P21.050.180	P21.063.180	P21.080.180	
200		P21.025.200	P21.032.200	P21.040.200	P21.050.200	P21.063.200	P21.080.200	
220			P21.032.220	P21.040.220	P21.050.220	P21.063.220	P21.080.220	
250			P21.032.250	P21.040.250	P21.050.250	P21.063.250	P21.080.250	
280			P21.032.280	P21.040.280	P21.050.280	P21.063.280	P21.080.280	
315					P21.050.315	P21.063.315	P21.080.315	
355					P21.050.355	P21.063.355	P21.080.355	
400					P21.050.400	P21.063.400	P21.080.400	
500							P21.080.500	
D2	20	25	32	40	50	63	80	
D3	25	32	40	50	63	76	93	
E	20	25	32	40	45	50	60	
d	M5	M6	M8	M10	M12	M16	M20	
m	7,3	9,6	10,1	10,6	11,3	12,1	13,3	
T	11,3	15,1		18,1				
M	16,0	20,3	24,0	30,0	36,5	42,5	51,0	
CLAMPS	B01.005.000	B01.006.000		B01.008.000				
SCREWS	A05.005.012 (M5x12)	A05.006.016 (M6x16)		A05.008.020 (M8x20)				
QTY	3				4			